



CUSTOMER DATA

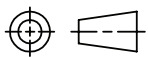
PART NO. VFM-15F71-S01 SHT. 1 OF 2



DRAWN M.BROWN APPROVAL C.GORDON DATE FIRST_DRAWN 06-29-04 SCALE 1=1

CUSTOMER TE_CONNECTIVITY_STANDARD

X.XXX = INCHES
(X.XX) = MILLIMETERS

TOLERANCE 0.X = +/- .1
UNLESS 0.XX = +/- .01
SPECIFIED 0.XXX = +/- .003
OTHERWISE ANGLES = +/- 1'


DO NOT SCALE THIS DRAWING

CHANGES			
REV.	DATE	CO	APP.
	03-27-07	CHG. RATINGS ^{NT}	
	24MAY2011	ECO-11-010686 ^{HMF}	HMF

ELECTRICAL CHARACTERISTICS: (ALL DATA APPLIES @ 23°C UNLESS OTHERWISE SPECIFIED)

COIL DATA:

NOMINAL VOLTAGE: 12 VDC
 OPERATE VOLTAGE: 7.2 VDC MAXIMUM
 RELEASE VOLTAGE: 1.2 VDC MINIMUM
 EQUIVALENT COIL RESISTANCE: 79.5 OHMS +/- 10%
 OPERATE TIME: 5 mSEC. TYPICAL (EXCLUDING BOUNCE) WITH RATED COIL VOLTAGE APPLIED
 RELEASE TIME: 2 mSEC. TYPICAL (EXCLUDING BOUNCE) WITH ZERO VOLTS APPLIED AFTER HAVING BEEN ENERGIZED AT RATED COIL VOLTAGE
 TEMPERATURE RANGE: STORAGE -40°C TO +155°C
 OPERATING -40°C TO +85°C
 OPERATING -40°C TO +125°C (APPLICATION DEPENDENT)

CONTACT DATA: (CONTACT DATA IS FORMATTED N.O./N.C.)

CONTACT ARRANGEMENT: 1 FORM C (SPDT)
 CONTACT MATERIAL: SILVER-TIN OXIDE
 CONTACT MILLIVOLT DROP: 200 mV @ 30A MAX. (AFTER SWITCHING)
 250 mV @ 20A MAX. (AFTER SWITCHING)
 MAXIMUM MAKE CURRENT: 150A/45A (LAMP) @ 16 VDC
 MAXIMUM BREAK CURRENT: 40A/20A @ 16 VDC RESISTIVE
 MAXIMUM CONTINUOUS CURRENT: 35A/20A @ 85°C
 INITIAL BREAKDOWN CURRENT: 500V RMS CONTACTS TO COIL
 EXPECTED LIFE: 100,000 OPERATIONS, 30 A, 14 VDC RESISTIVE AT 23°C

MECHANICAL CHARACTERISTICS:

EXPECTED LIFE: 10 MILLION OPERATIONS, NO CONTACT LOAD, 20 OPERATIONS PER SECOND MAXIMUM

OBSOLETE NOT the LATEST REVISION



CUSTOMER DATA

PART NO.
VFM-15F71-S01

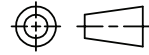
SHT. 2
OF 2

DRAWN M.BROWN
APPROVAL C.GORDON
DATE FIRST_DRAWN 06-29-04
SCALE 1=1

CUSTOMER
TE_CONNECTIVITY_STANDARD

X.XXX = INCHES
(X.XX) = MILLIMETERS

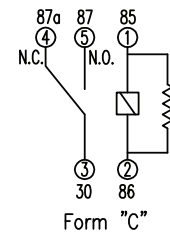
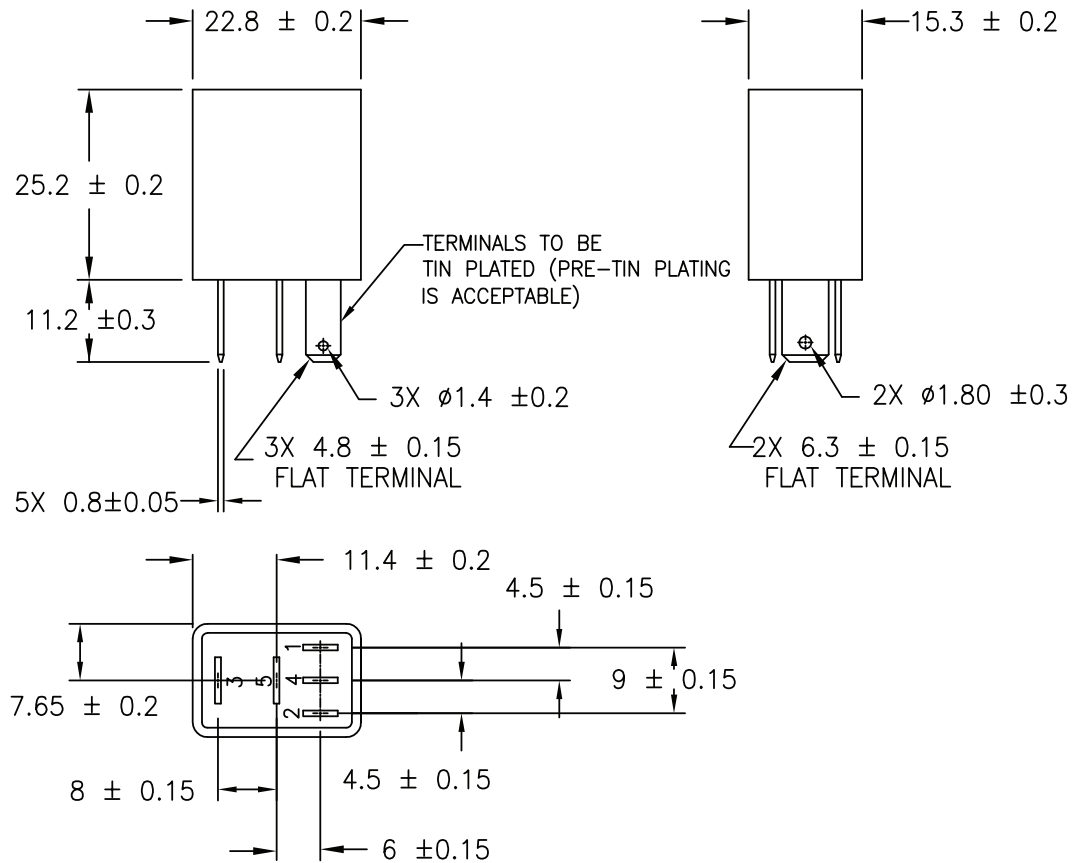
TOLERANCE 0.X = +/- .1
UNLESS 0.XX = +/- .01
SPECIFIED 0.XXX = +/- .003
OTHERWISE ANGLES = +/- 1°



DO NOT SCALE THIS DRAWING

REV. E

MARKING TO INCLUDE:
MANUFACTURER'S NAME, MANUFACTURER'S PART NUMBER,
HI PWR, SCHEMATIC, COUNTRY OF
ORIGIN, AND DATE CODE



SCHEMATIC DIAGRAM